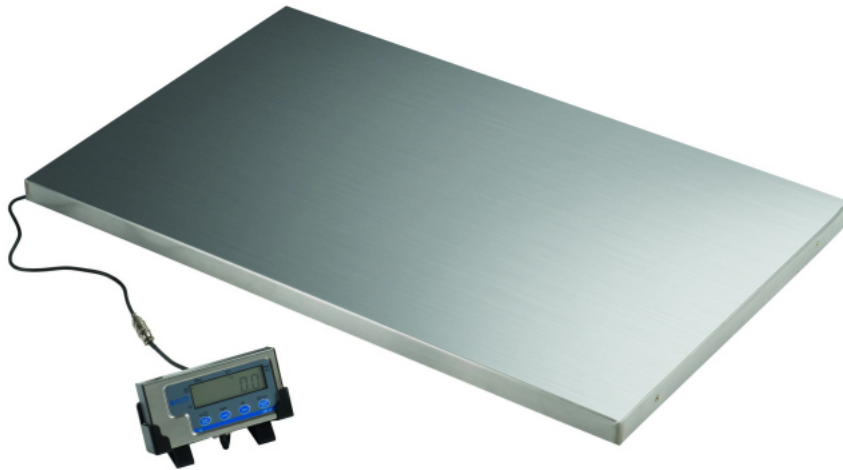


**WS300-90**



## Light Capacity Platform Scales



- Low cost
- Stainless steel platform top
- Stainless steel display pod
- Mains or battery power
- 300 kg capacity
- 90x60cm Platform Size
- Bench or wall mounted display
- RS-232 output standard

# WS 300 Light Capacity Platform Scales

## Features

WS 300 light capacity platform scales provide a low cost solution for general purpose weighing of any item up to 300 kg capacity.

With 1 part in 6000 resolution these platform scales give a weighing performance of 300 kg x 50 g.

These well designed low profile machines incorporate four full load bridge loadcells with self levelling, anti-slip feet to give a solid base in use.

The generous size weigh platforms are available in either WS 300-50 (550 mm x 550 mm) or WS 300-90 (900 mm x 550 mm). The WS 300-90 comes with a green rubber mat. WS 300 have a tough, mild steel understructure and a stainless steel top.

5 metres of cable connects the base to the stainless steel indicator pod which features clear 17 mm high LCD display digits. A plastic display pod bracket is included to enable the indicator to be wall or bench mounted.

Key display features are: on/off, push button tare to enable container weights to be removed and net weight only displayed; kg/lb switching to give readings in either metric or imperial measures and hold/print, which allows the weight to be either frozen even when the item being weighed is removed or the weight to be transmitted to a printer or other peripheral device.

The scales feature auto zero tracking to automatically compensate for small fluctuations in zero such as a build up of material on the platform.

To extend battery life an auto-off feature is standard, with the scale switching itself off after 2 minutes of inactivity.

## Specifications

**Capacity:** 300 kg x 50 g

**Power:** 4 x 1.5 volt AAA batteries (not supplied)  
6 volt UK/EU power adaptor (supplied)

**Platform Dimension:**

WS 300-90: 900 mm x 550 mm x 60 mm

**Display Pod:** Stainless steel housing

**Display Pod Size:** 160 mm x 80 mm x 30 mm

**Display:** 5 ½ digit, 17 mm high, LCD

**Function Keys:** On/off; tare; kg/lb; hold/print

**Annunciators:** Zero; net; hold; kg/lb

**Tare:** 100% subtractive

**Operating Temperature:** +5° C to + 40° C

**Approvals:**

CE

WEEE directive

**Product Code:**

WS 300-90: 816965003761

**Unit Weight:**

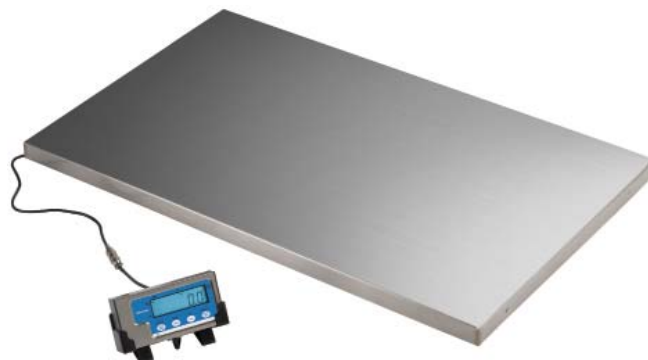
WS 300-90: 17 kg

**Packing Dimension:**

WS 300-90: 1030 mm x 690 mm x 140 mm

**Packed Weight:**

WS 300-90: 19 kg



a division of Avery Weigh-Tronix, LLC

### Brecknell

1000 Armstrong Dr., Fairmont, MN 56031  
Toll free: 800-637-0529, Tel: 507-238-8702  
Fax: 507-238-8271  
e-mail: sales@brecknell scales.com  
www.brecknell scales.com



### Brecknell

Foundry Lane, Smethwick  
West Midlands B66 2LP UK  
Tel: +44 (0) 845 246 6717  
Fax: +44 (0) 845 246 6718  
Email: sales@brecknell scales.co.uk  
www.brecknell scales.co.uk

