

Item	Settings
Speed	127 mm/sec (5 ips) (203 DPI)
Density	7
Label Width	4.25" (108.0 mm)
Label Height	2.5" (63.4 mm)
Sensor Type	Gap sensor
Gap Setting	0.12" (3.0 mm)
Print Direction	0
Reference Point	0,0 (upper left corner)
Offset	0
Tear Mode	On
Peel off Mode	Off
Cutter Mode	Off
Serial Port Settings	9600 bps, none parity, 8 data bits, 1 stop bit
Code Page	850
Country Code	001
Clear Flash Memory	No

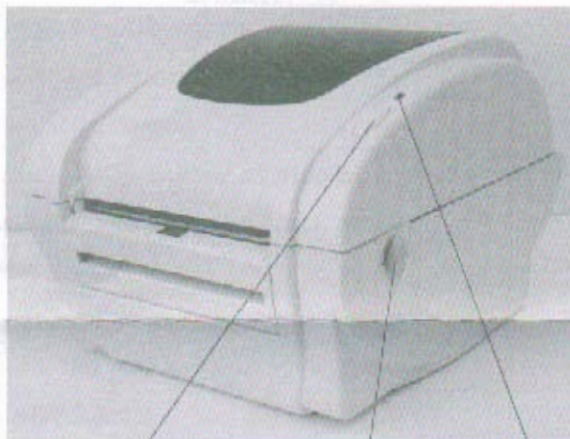
# Quick Installation Guide

## 1. Printer Installation

Arrange this printer on a reliable flat surface and make sure the power switch is off.

1. Connect the printer to a computer mainframe with a provided Centronics, RS-232C or USB cable.
2. Plug a power cord into a power jack connector at the rear of the printer, and then plug the power cord into a properly grounded receptacle (refer to figure 2).

**Figure 1**

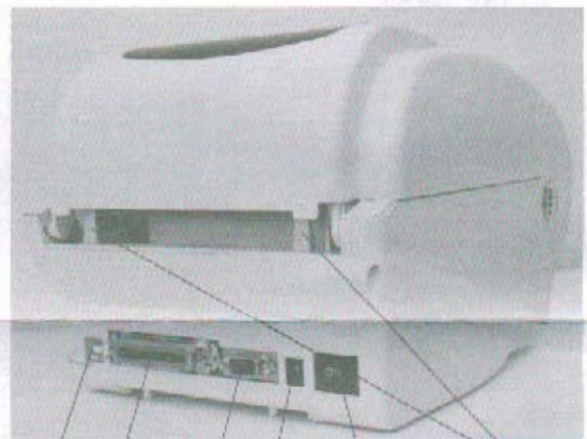


**Feed Button**

**Power LED**

**Top Cover Open Lever**

**Figure 2**



**USB**

**RS-232**

**Rear Paper Guide**

**Centronics**

**Power Jack**

**Power Switch**

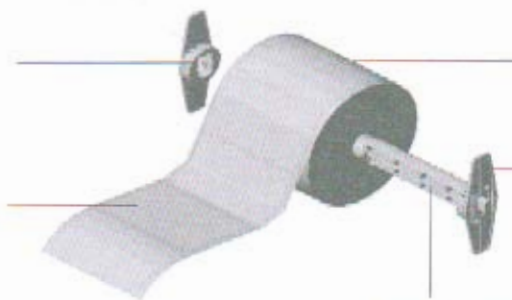
## 2. Loading the Label

1. Insert a paper roller into a paper roll. ( \* If your paper core is 1 inch, remove the 1.5 inch paper core adapter from the fixed tab) (refer to figure 3).

**Figure 3**

**1.5 inch Paper  
Core Adapter\***

**Printing Side  
Face Up**



**Paper Roll**

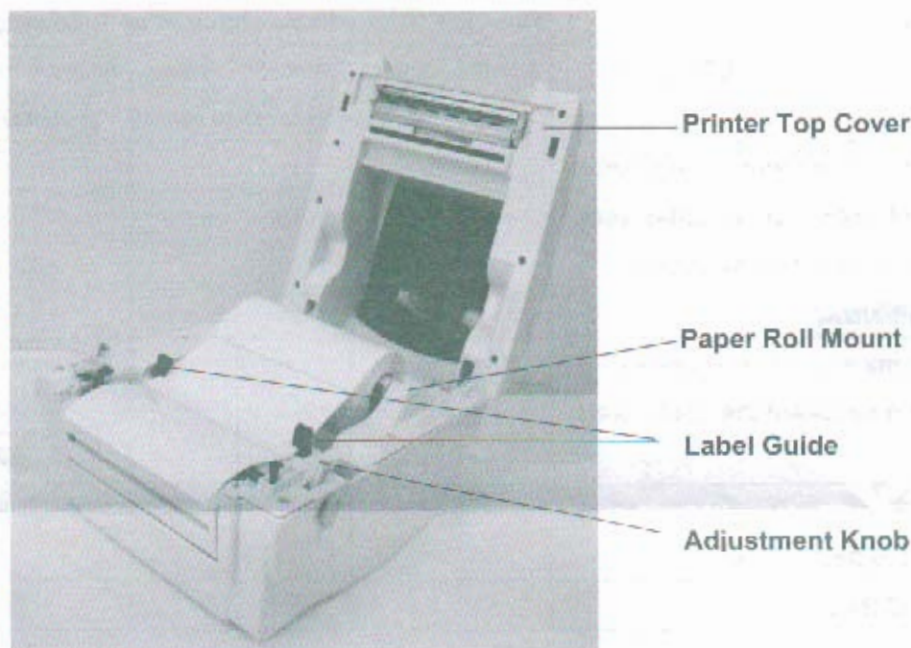
**Fixed Tab**

**Paper Roller**

2. Open the printer top cover by pushing forward the top cover open levers.
3. Orient a roll of paper on the paper roll mount (refer to figure 4).
4. Feed the paper, printing side face up, through the label guide and pass over the platen.
5. Adjust the black center-biased **label guides** in or out turning adjustment knob so they are slightly touch the edges of the label backing.
6. Close the printer top cover slowly and make sure the cover locks latch securely.

**Note:** *failure to securely close and lock the cover will result in poor print quality.*

**Figure 4**



### 3. Button Function

This printer has one button and one three-color LED indicator. By indicating the LED with different color and pressing the button, printer can feed labels, pause the printing job, select and calibrate the media sensor, print printer self-test report, reset printer to defaults (initialization). Please refer to the button operation below for different functions.

#### ◆ Regular button function

##### 1. Feed labels

When the printer is ready, press the button to feed one label to the beginning of next label.

##### 2. Pause the printing job

When the printer is printing, press the button to pause a printing job. When the printer is paused the LED is **green** with **blinking**. Press the button again to continue the printing job.



#### ◆ Power on utilities

There are six power-on utilities to set up and test printer hardware. These utilities are activated by pressing FEED button then turning on the printer power simultaneously and release the button at different color of LED.

Please follow the steps below for different power-on utilities.

1. Turn off the power switch.
2. Hold on the button then turn on the power switch.
3. Release the button when LED indicates with different color for different functions.

Power on utilities	The LED color will be changed as following pattern:						
LED color	Amber	Red (5 blinks)	Amber (5 blinks)	Green (5 blinks)	Green/Amber (5 blinks)	Red/Amber (5 blinks)	Solid green
Functions							
1. Gap / black mark sensor calibration		Release					
2. Gap / black mark sensor calibration, Self-test and enter dump mode			Release				
3. Printer Initialization				Release			
4. Set black mark sensor as media sensor and calibrate the black mark sensor					Release		
5. Set gap sensor as media sensor and calibrate the gap sensor						Release	
6. Skip AUTO.BAS							Release

#### Note:

1. Please select gap or black mark sensor by GAP or BLINE command or by power-on utility function 4 or 5 prior to calibrate the sensor. For more information about GAP and BLINE command, please refer to TSPL2 programming manual.
2. After dump mode, turn off / on the power to resume printer for normal printing.
3. Always do gap/black mark sensor calibration after printer initialization or after changing different type of media.
4. Printer default settings are listed as below:

3. Select **CD-ROM drivers** and click **Next** to continue.
4. The wizard found a driver for the device. Please click **Next** to continue.

Figure 3

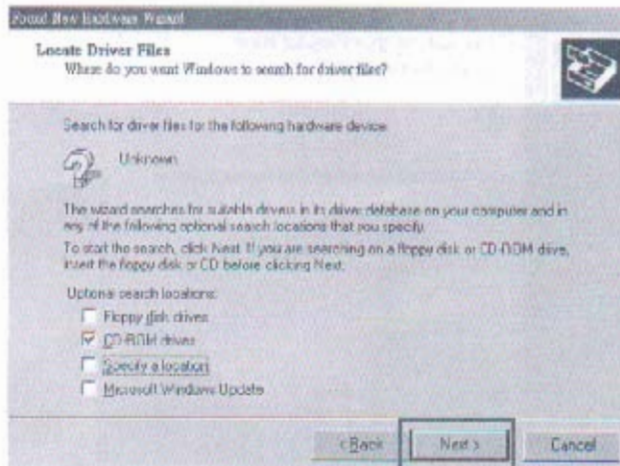
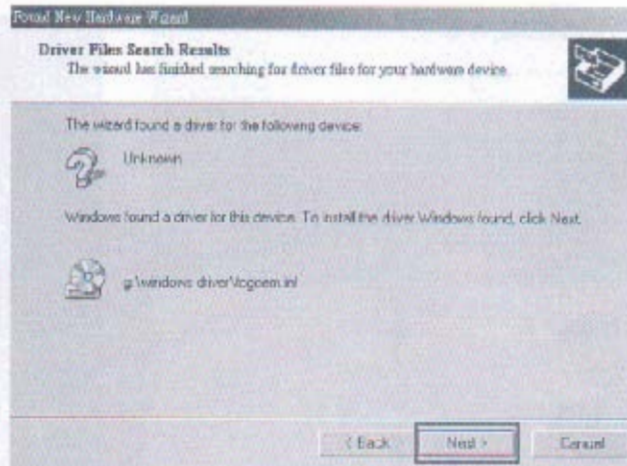


Figure 4



5. Click **Yes** to continue.
6. Click **OK** to continue.

Figure 5

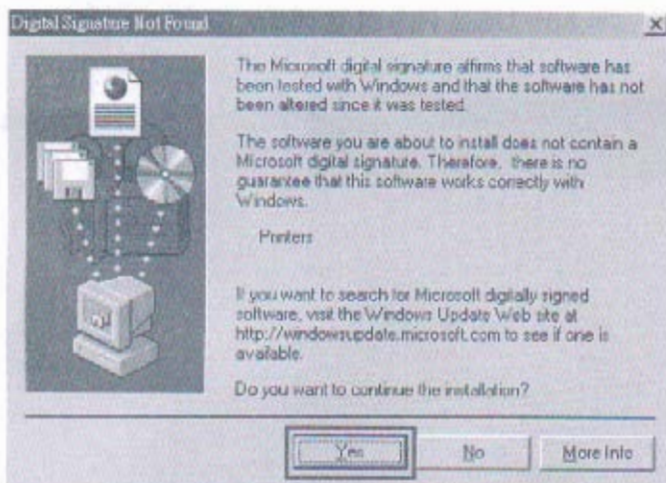
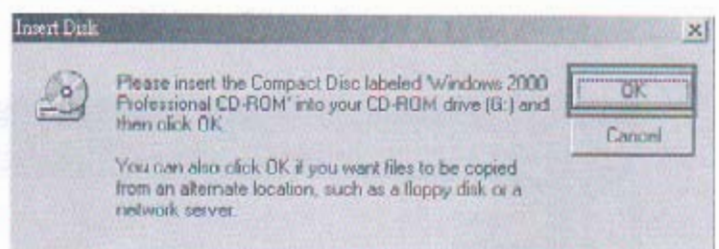


Figure 6





7. Click **Browse** to select CD-ROM and **Windows Driver** then click **OK**.
8. Windows has finished installing the software for this device. Click **Finish** to close the wizard.

Figure 7

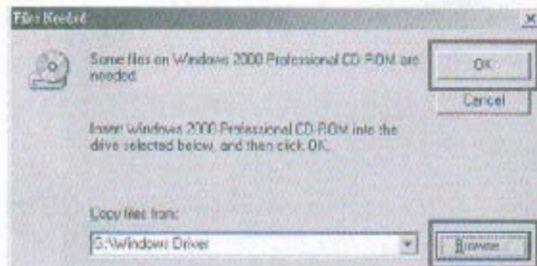
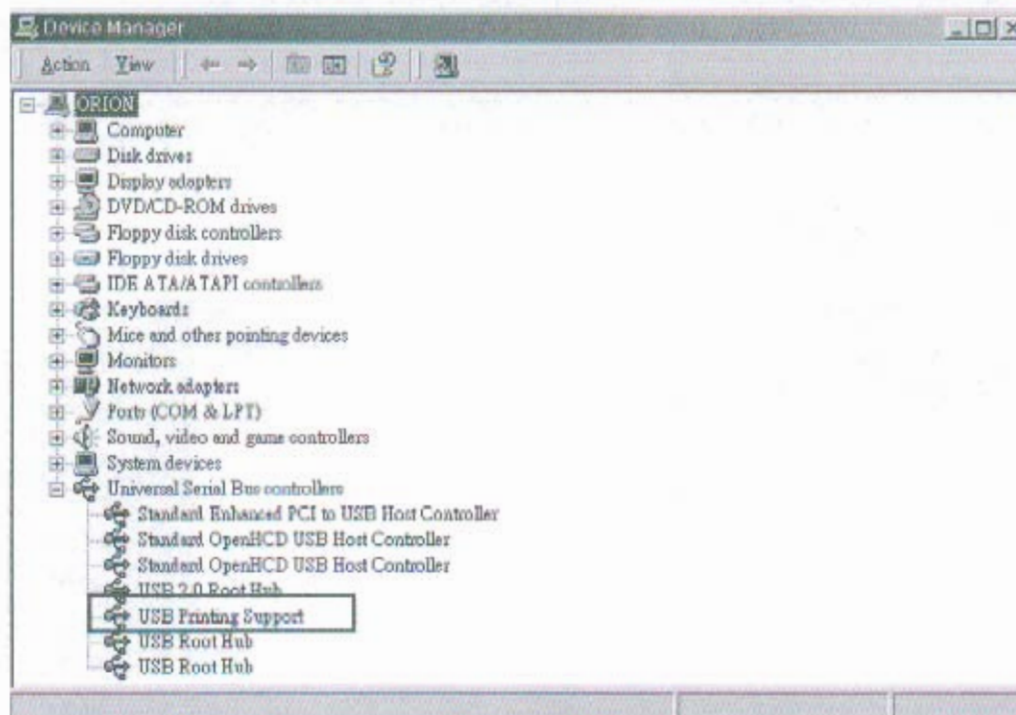


Figure 8



## Software Verification

1. Right click **My Computer** at desktop and select **Properties**.
2. Select **Hardware** on the menu bar and click **Device Manager**.
3. Click **Universal Serial Bus controllers**, you will see **USB Printing Support**.



## Hardware Installation

1. Place the printer on a flat, secure surface.
2. Make sure the power switch is off.
3. Connect the printer to the computer with the USB cable.
4. Plug the power cord into the power supply connector at the rear of the printer, and then plug the power cord into a properly grounded receptacle.

Figure 9



# USB Installation Guide

## 1. Feature

- 1 One USB upstream port.
- 2 Compliant with USB Specification Revision 1.1
- 3 Full speed (12Mbps) and low speed (1.5 Mbps) packet protocol.
- 4 Supports self-powered mode.
- 5 DC24V power supply.

## Supported O.S.

O.S.	Function	USB 1.1 Printer
Windows 98SE		Vendor Support
Windows ME		Vendor Support
Windows 2000		Vendor Support
Windows XP		Vendor Support

## Software Installation

### Windows

Before installing software, please insert the CD-ROM at CD-ROM drive and get hardware installed properly. ( refer to figure 9 )

1. The wizard found a hardware device. Please click **Next** to continue.
2. Select **Search for a suitable driver for my device [recommended]**, and click **Next**

Figure 1



Figure 2

